

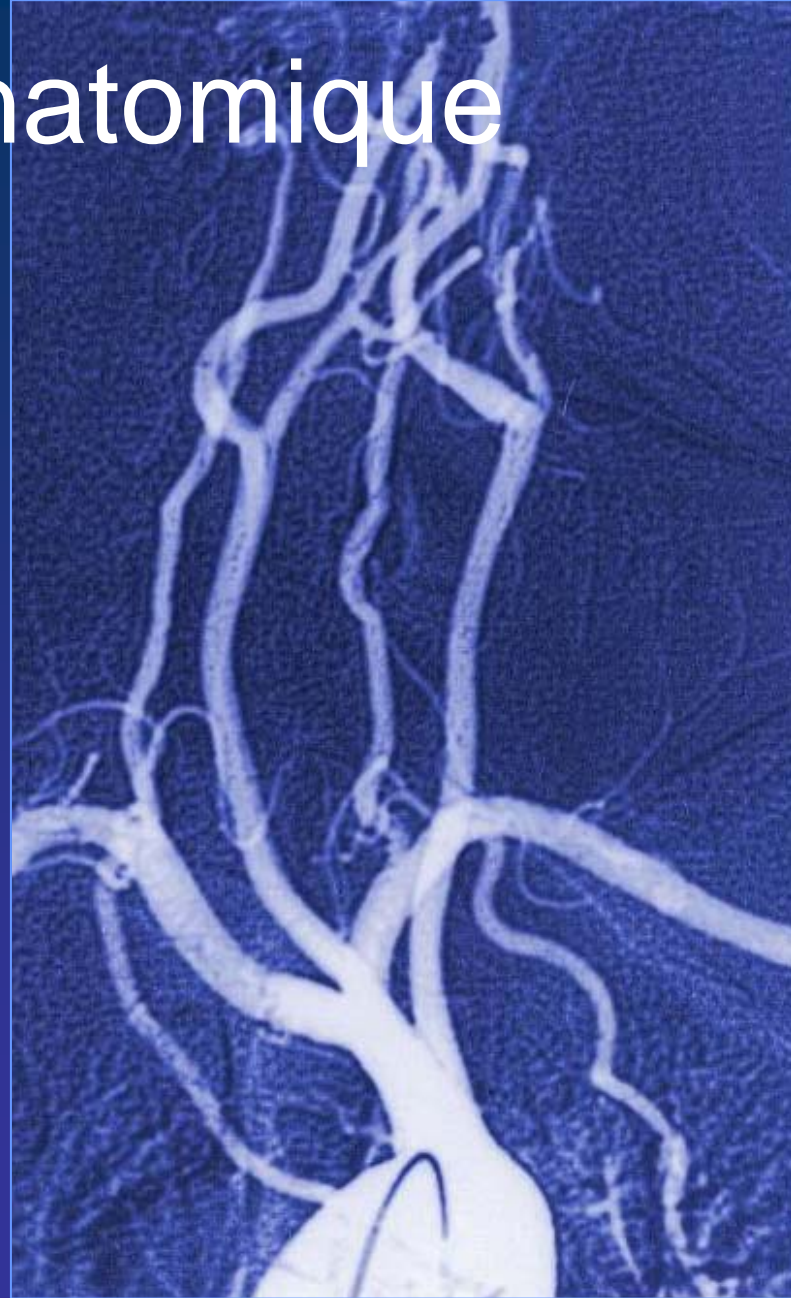


Angioplastie des vx supra-aortiques

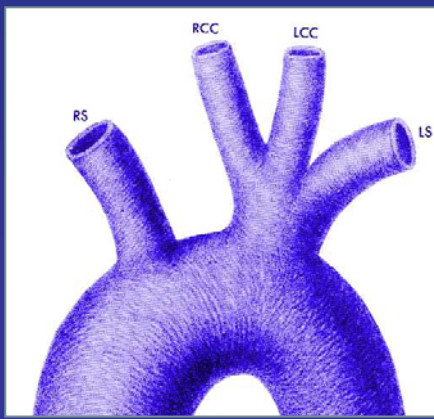
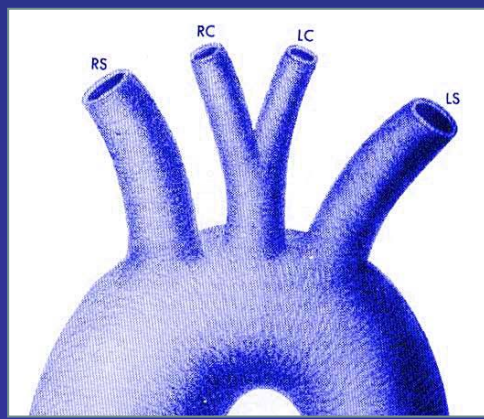
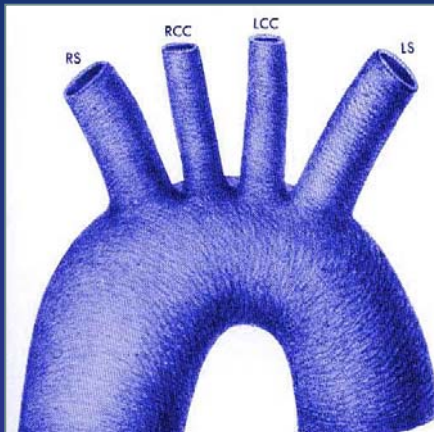
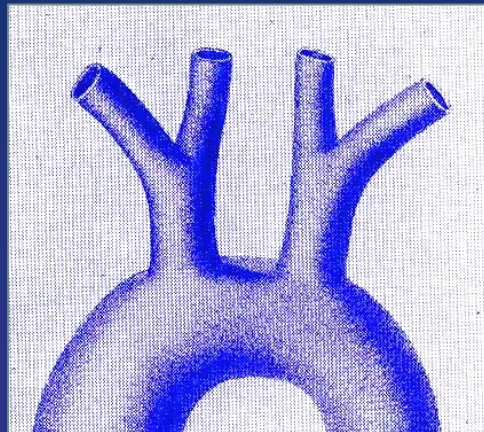
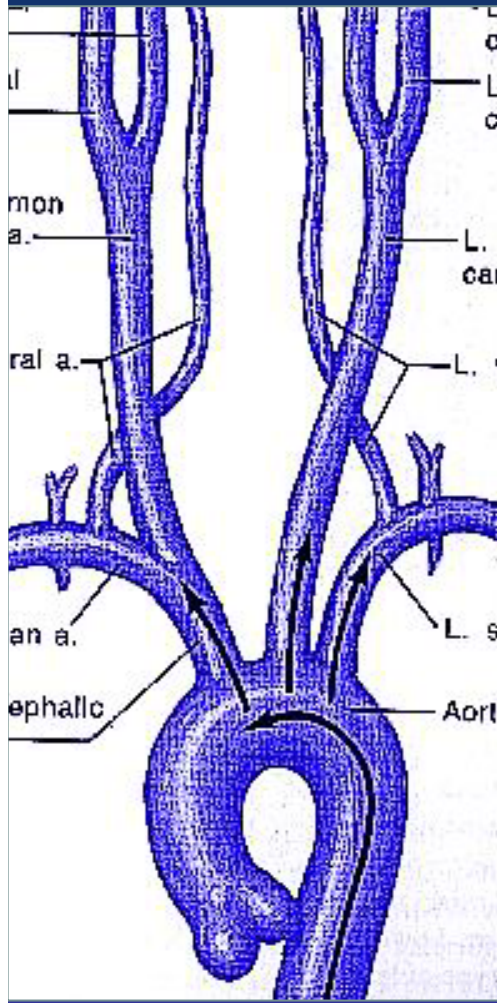
anatomie/physiopathologie
ex paracliniques
indications thérapeutiques

en 10'

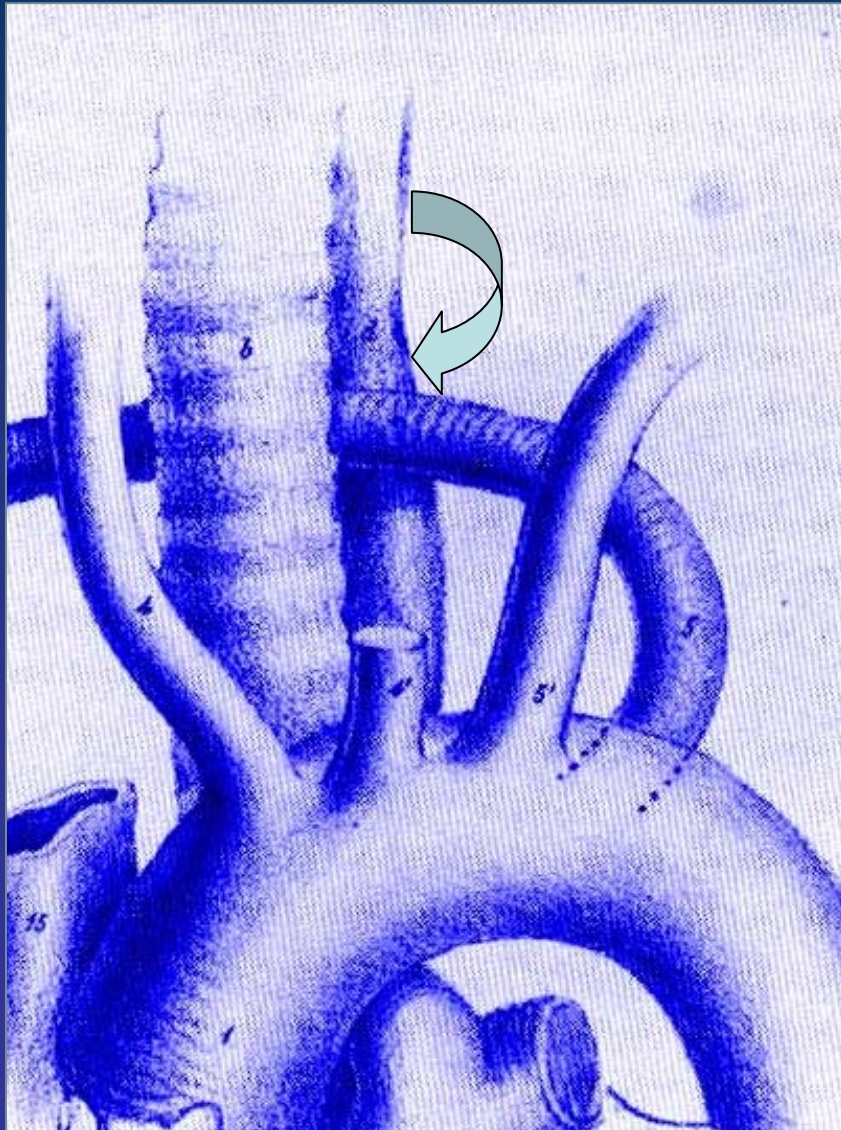
Rappel anatomique



variations from normal



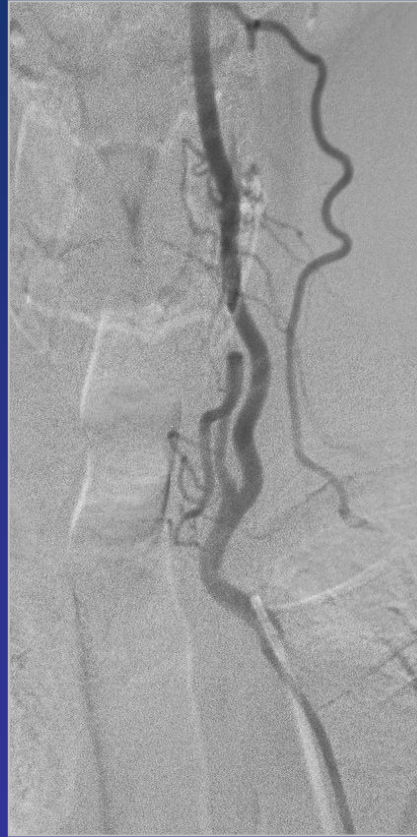
arteria lusoria



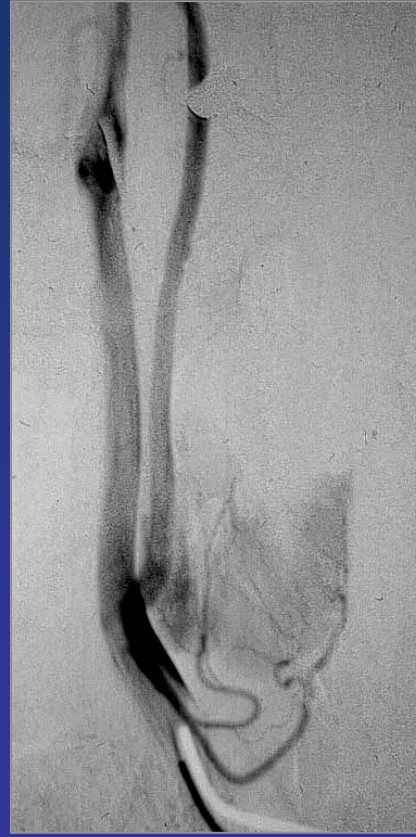
variations from thyroid arteries



sup. thyroid a.
from CCA



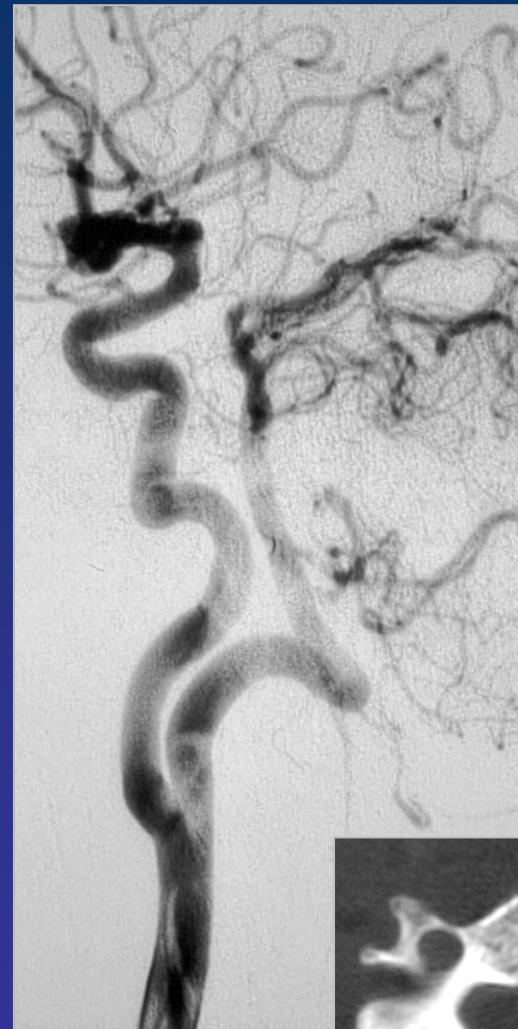
thyroid a. from
vertebral

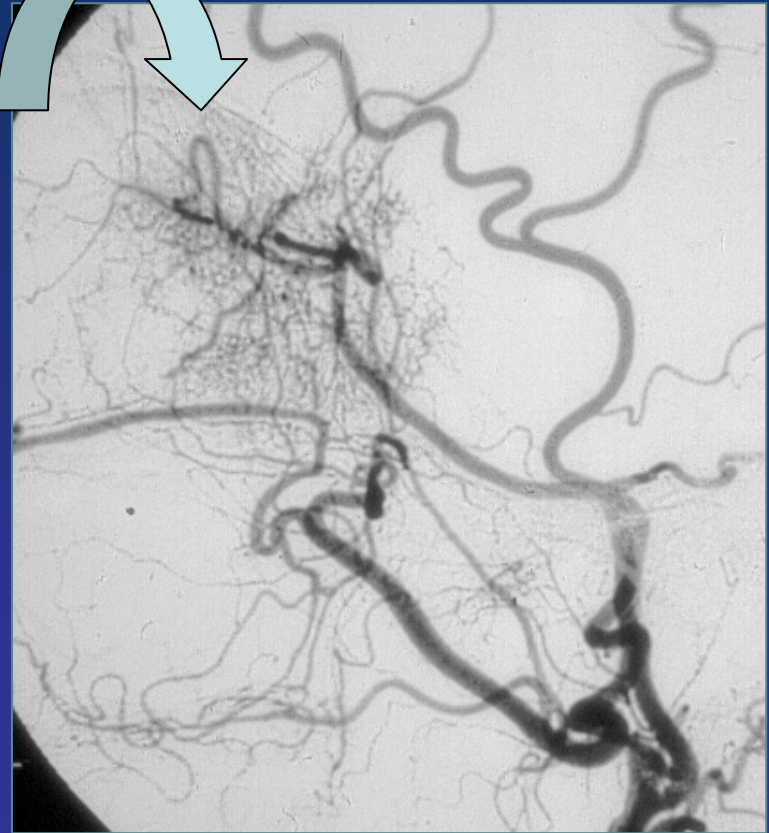


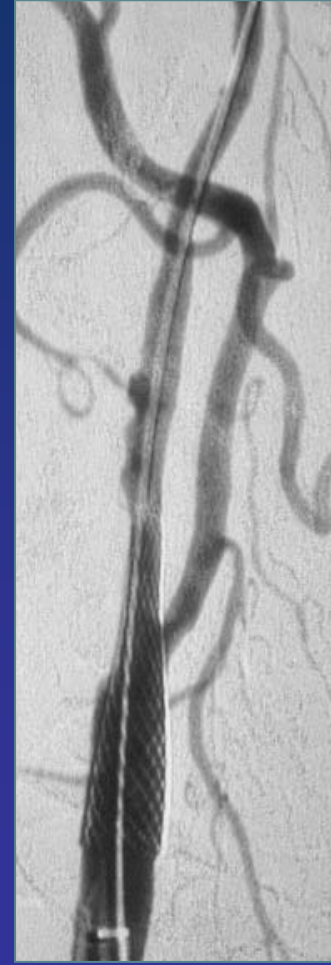
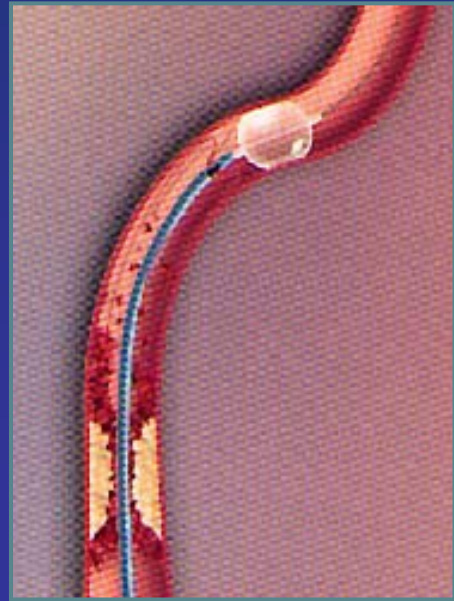
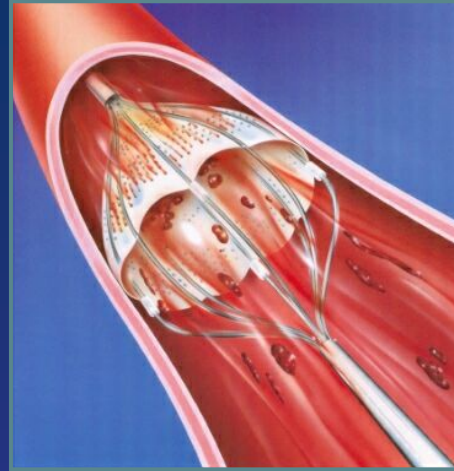
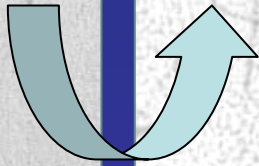
a.thyroidea ima

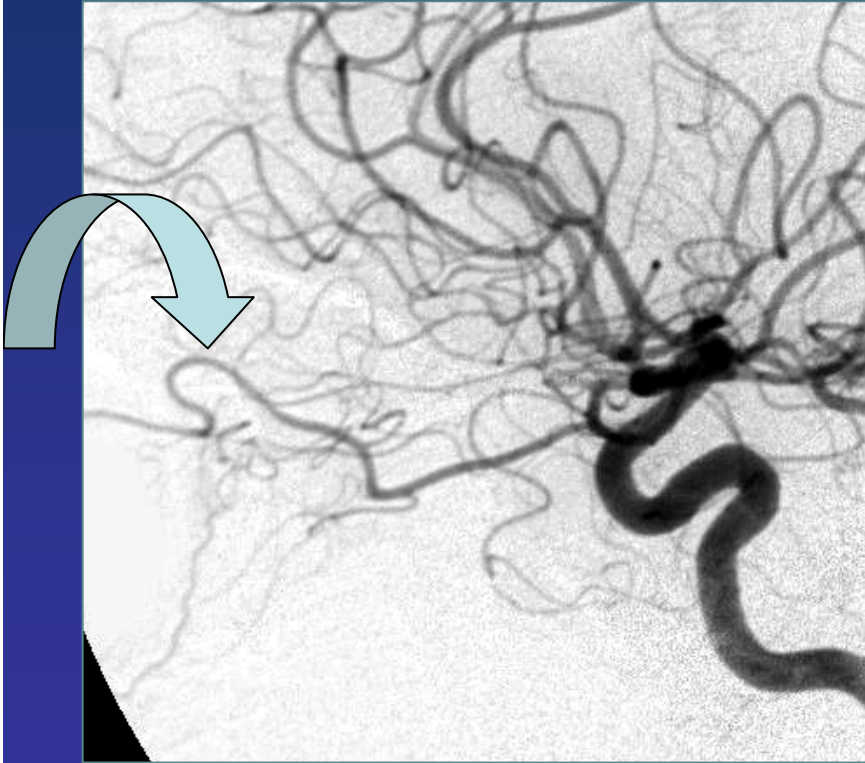
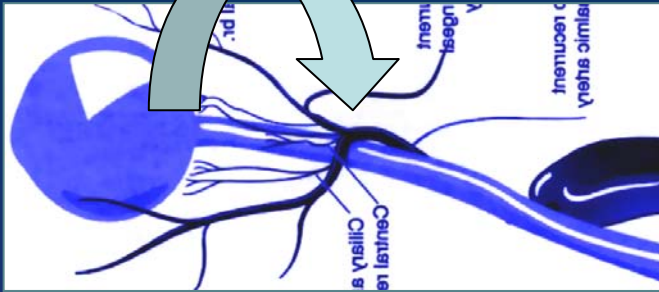


common trunk

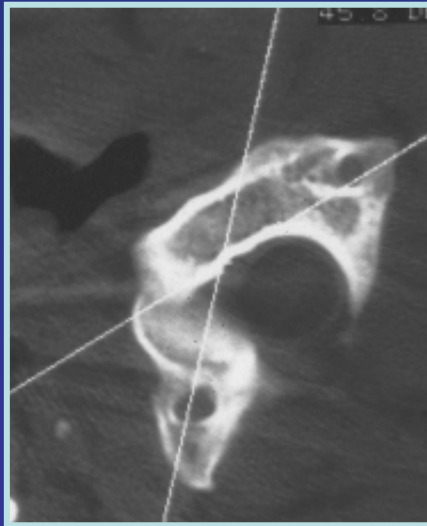
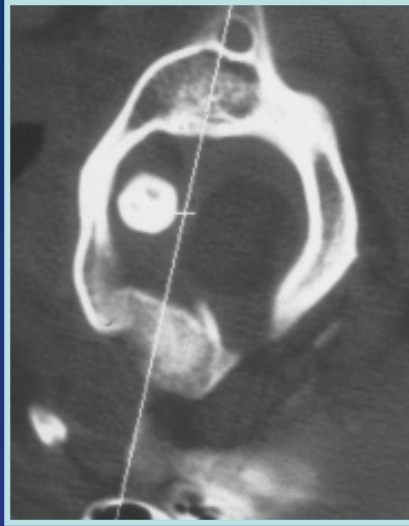
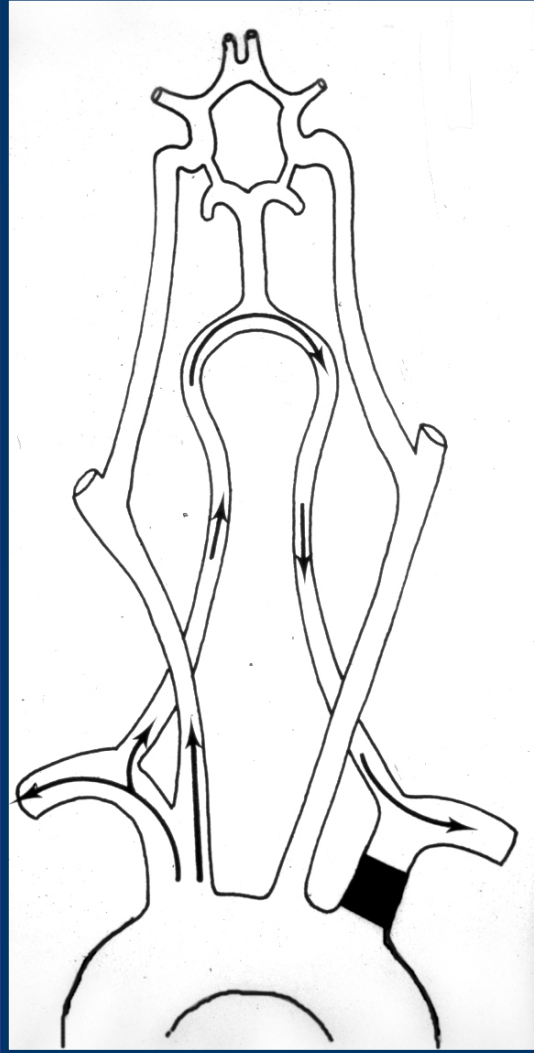


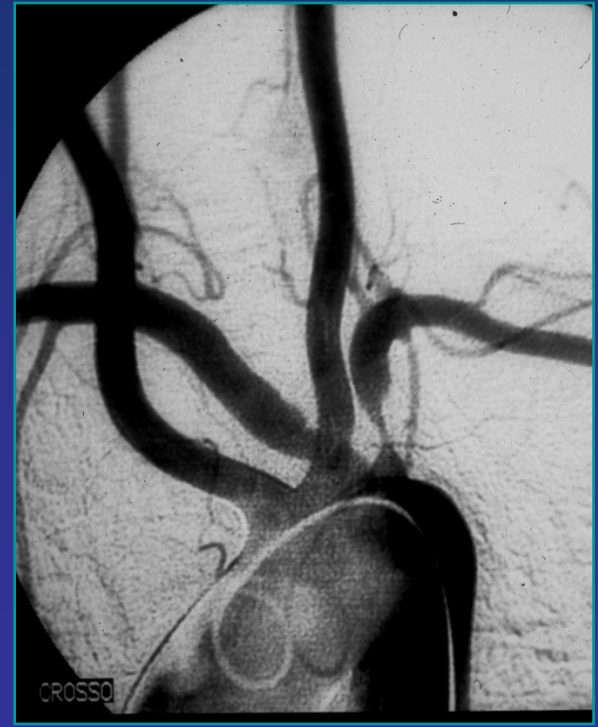
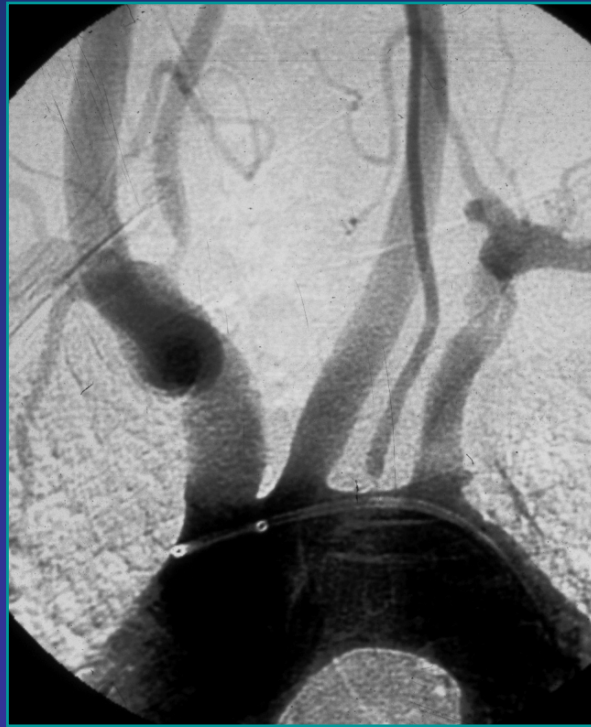
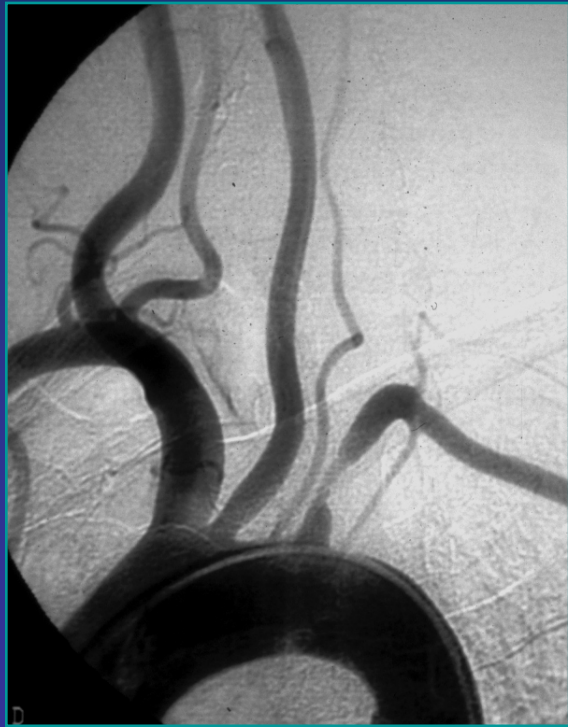




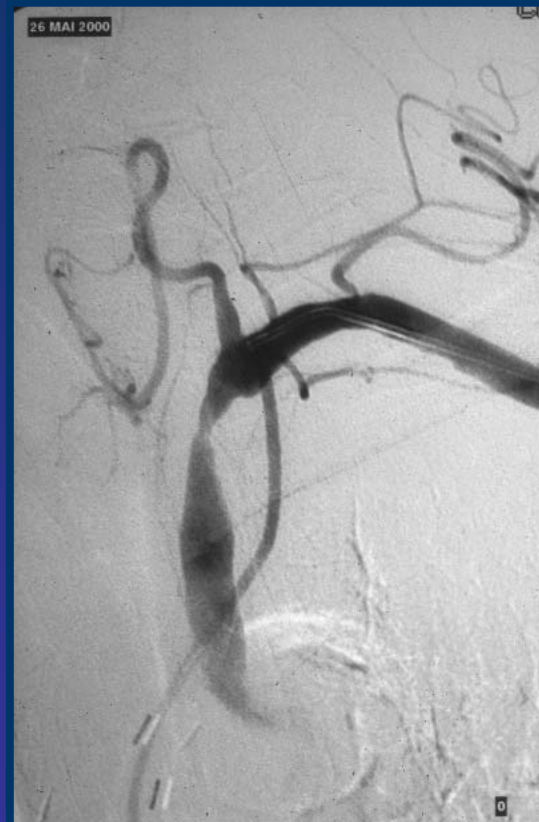


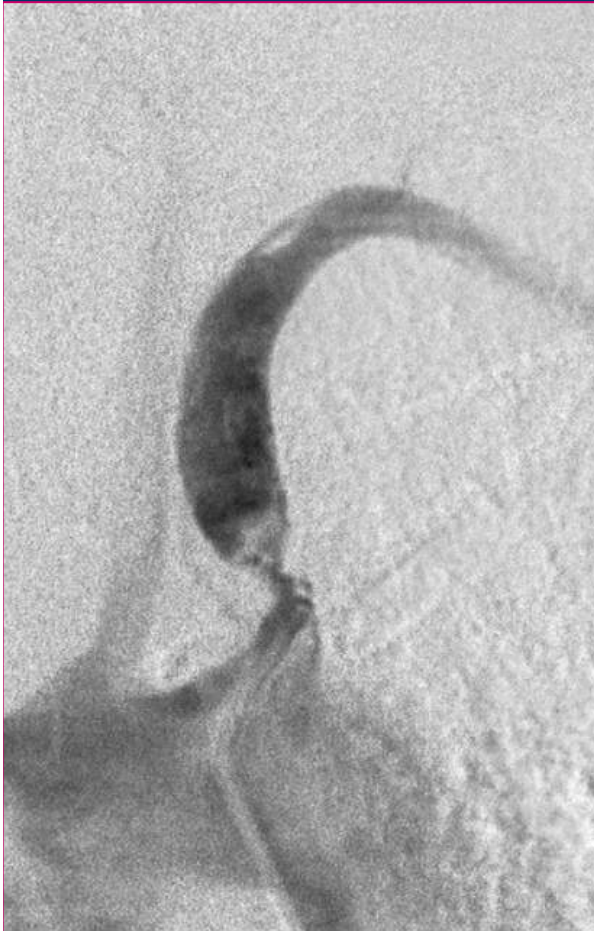






physiopathologie

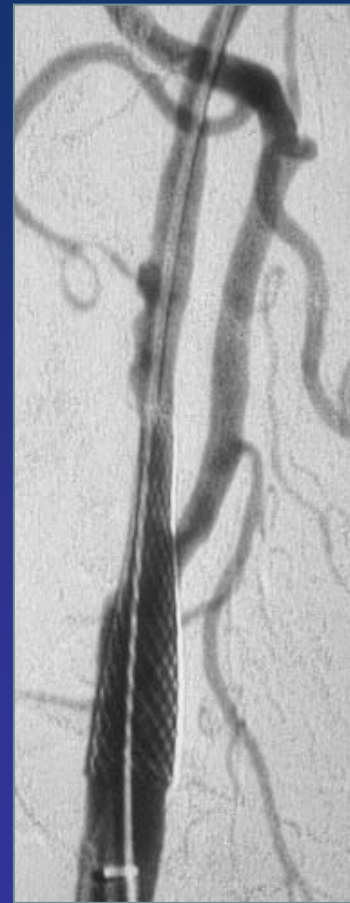
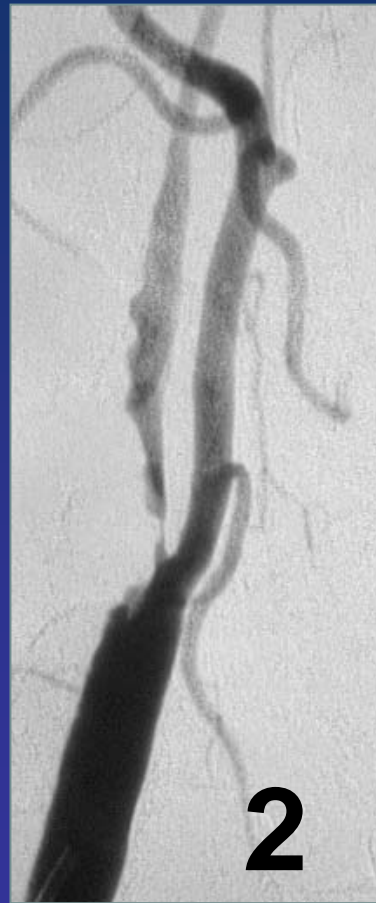
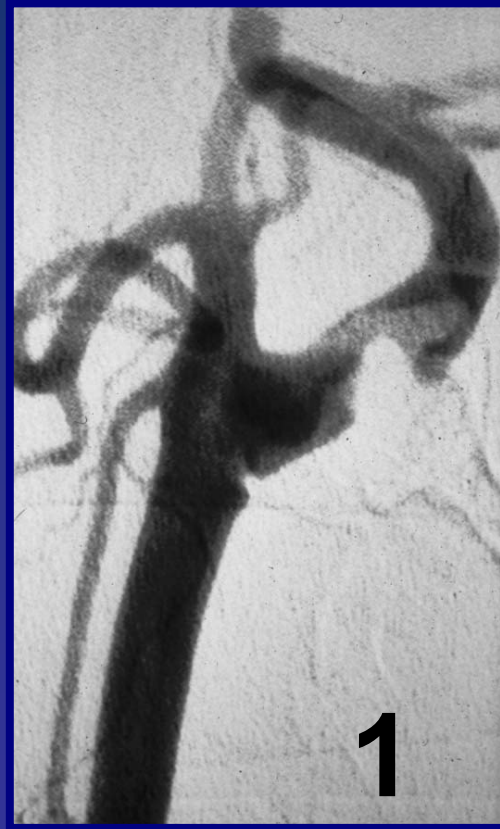


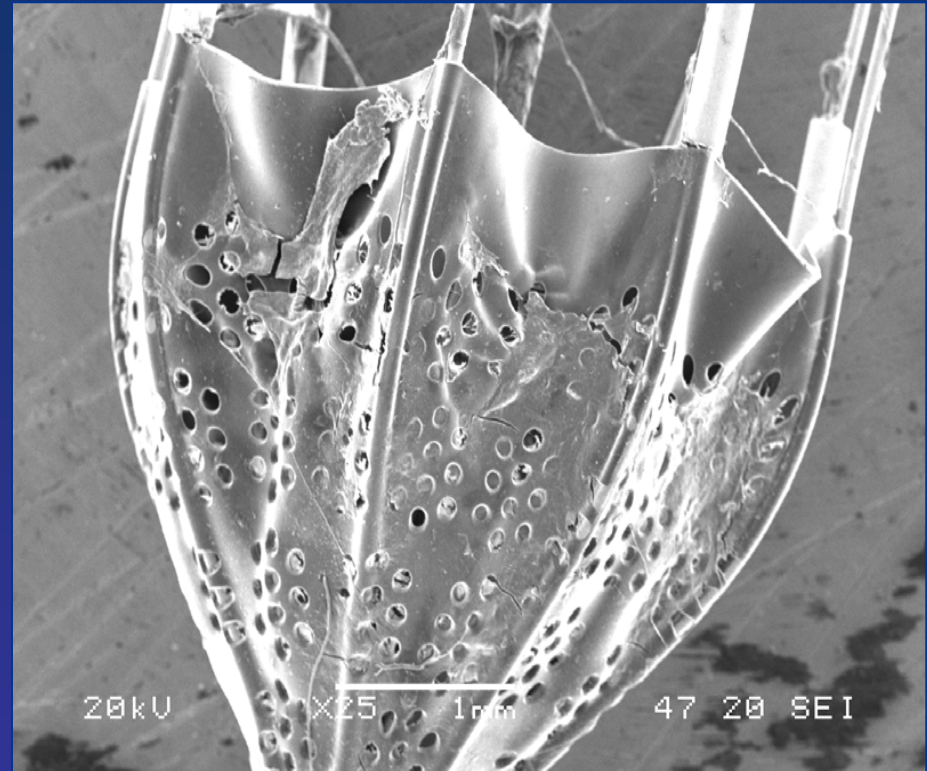
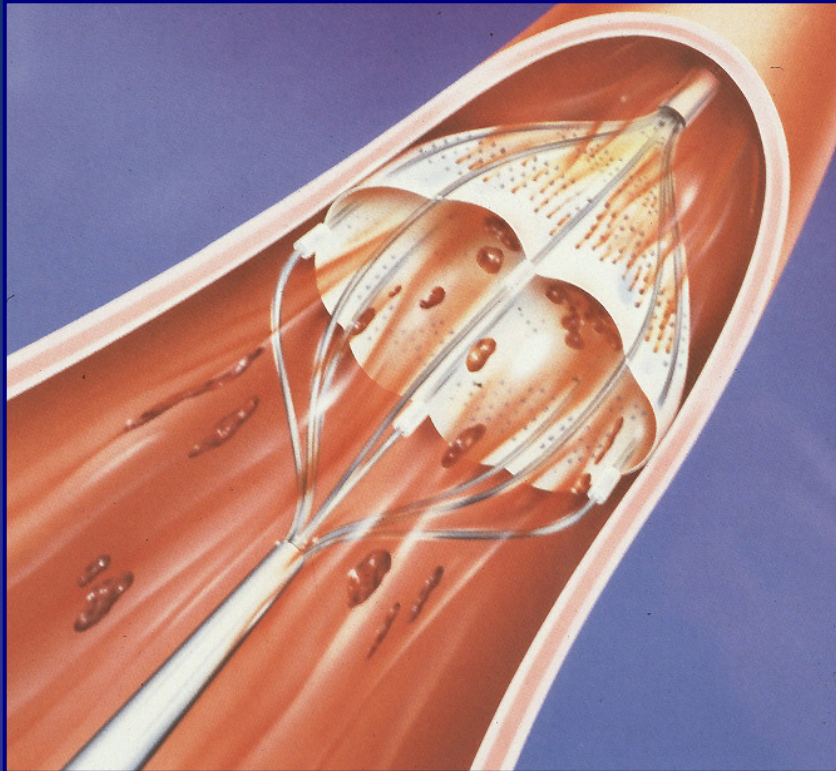


Brigitte, 40 ans,
tabac++
doigts bleus

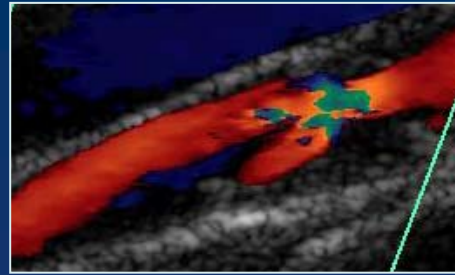


physiopathologie

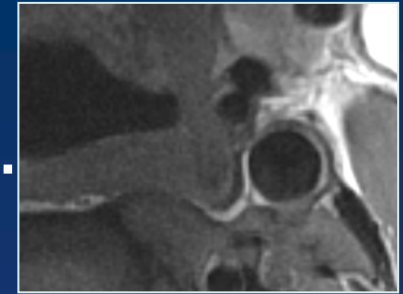




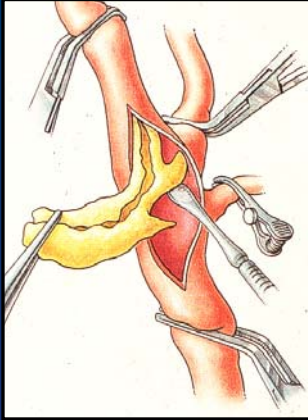
ex paracliniques : US



et .







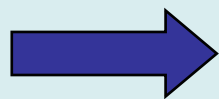
NASCET 1991: sténose symptomatique > 70%

le risque de récurrence d'infarctus
cérébral ipsilatéral en **2 ans** passe de



26% avec l'aspirine à

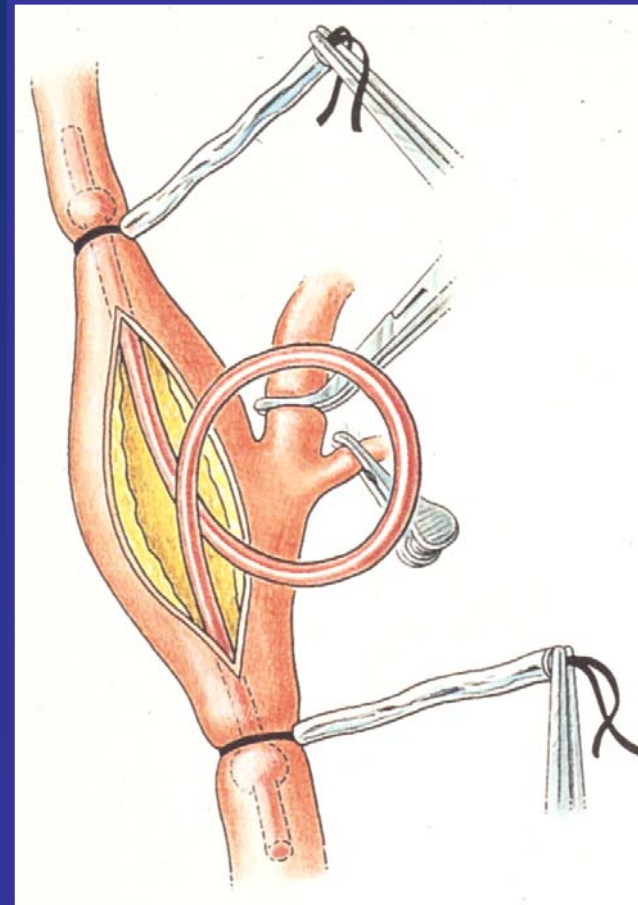
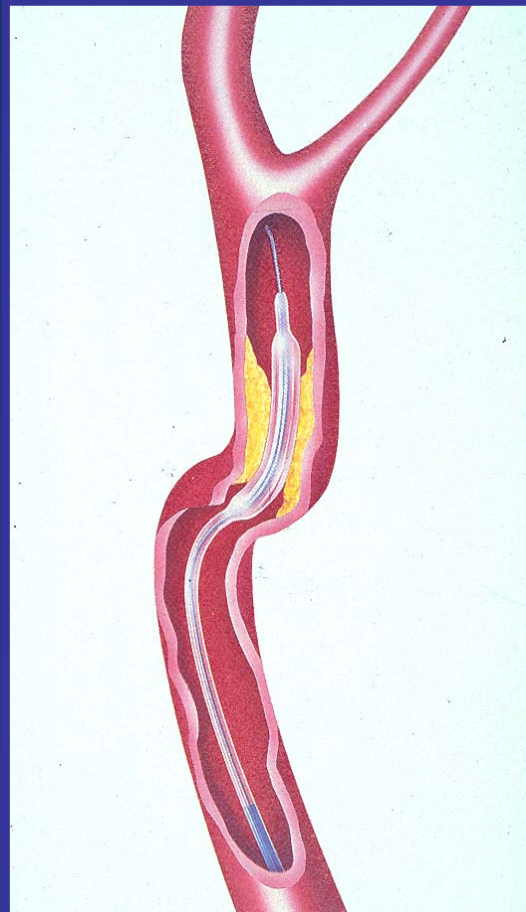
9% avec la chirurgie

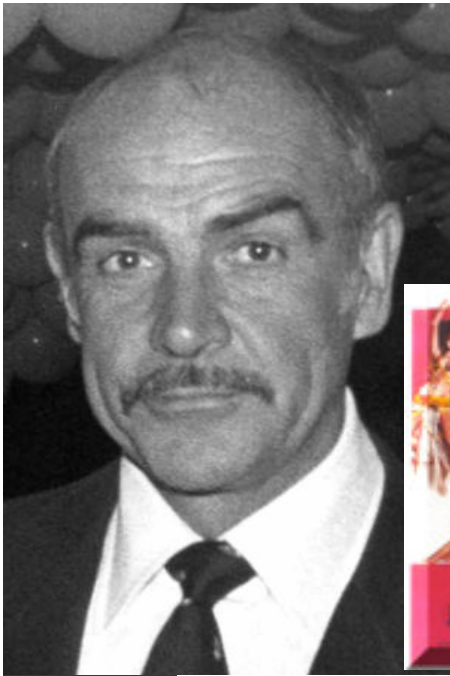


bénéfice marginal si sténose 50-69%
nul si sténose < 50%

North American Study of Carotid Endarterectomy Trial

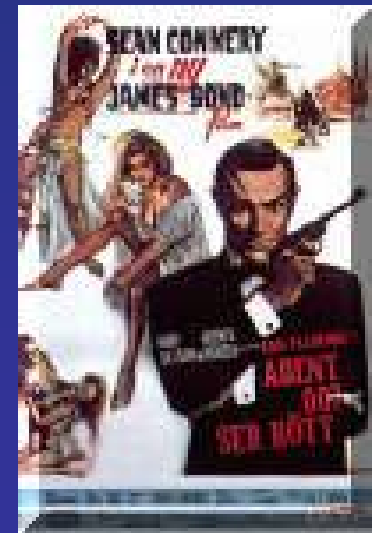
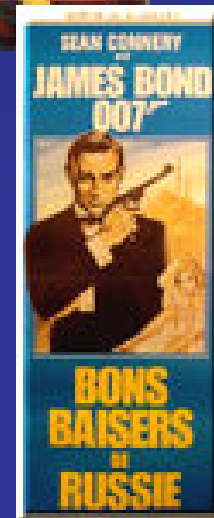
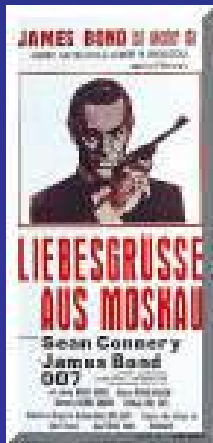
Indications thérapeutiques





carotide

007



EVA 3 S: N Engl J Med oct 19, 2006

- Trial stopped after inclusion of 527 pts for reasons of safety and futility
- 30-day any stroke or death
CEA 3.9% vs CAS 9.6%
- Relative risk of any stroke or death
CAS vs CEA : 2.5
- 30-day disabling stroke or death
CEA 1.5% vs CAS 3.4% (relative risk 2.2)
- **6 months any stroke or death**
CEA 6.1% vs CAS 11.7%



